	Mitsubishi Lancer Evo X TECHNICAL BULETIN	Series	Super Gr.N
		Page	1/7
		Data	Set 2008

Subject: System technical details

Introduction

The aim of this document is to inform the Super group N distributors and the users about the system features and components.

In brief the only major components carried over from the Evo 9 is the front calliper and the pads.

Contents

Front tarmac kit

Front gravel kit

Rear tarmac & gravel kit

Monobloc Calipers Front & Rear technical details

P4 38/44 Aluminium forged mono-bloc caliper.

Front left p/n XA5T0.03

Front right p/n XA5T0.04

P4 26/30 Aluminium forged mono-bloc caliper

Rear left p/n XA7G0.11

Rear right p/n XA7G0.12

Pads

Brembo recommend the use of Brembo RB170 pads.

Discs technical details

Front Tarmac

Cast iron disc 355X32 64mm annulus 72 Vanes with Brembo logo

Front Gravel

Cast iron disc 300X32 52mm annulus 48 Vanes with Brembo logo

Rear


Cast iron disc 295X25,4 47,5mm annulus 48 Vanes with Brembo logo

Brackets technical details

Front

Aluminium alloy with hard anodizing and heli-coil

P.S. The discs inside the kits are already assembled with the specific bells

	Mitsubishi Lancer Evo X TECHNICAL BULETIN	Series	Super Gr.N
		Page	2/7
		Data	Set 2008

Caliper service

The recommended working temperature for the Super Gr.N caliper is <200°C, whereas the maximum acceptable working temperature is 220°C.

Over 240°C the seals fitted into caliper can be overheated and they will not guarantee the right performances of the caliper (sealing, roll back, fluid absorption,...).

In order to keep under control the caliper temperature Brembo suggests to use its thermo-tape:

- scale 132°C/210°C p/n 025168.10
- scale 210°C/260°C p/n 025168.13

If the caliper temperature goes over 240°C the seals have to be opportunely refreshed.

After 1000km of special stage the caliper has to be serviced changing the following components:

1. pistons
2. seals
3. pad abutments
4. bleed screws
5. bridge pipe (if needed)

Conversion Tarmac –Gravel and vice versa

In order to concert a Tarmac kit in a gravel kit it is necessary to change the front brackets and the front disc-bell assemblies. The calipers are the same.

Service kit

Seal Family & Diameter	Kit P/N
A-24	105.5955.50
A-26	105.5955.51
A-28	105.5955.52
A-30	105.5955.53
A-32	105.5955.54
A-34	105.5955.55
A-36	105.5955.56
A-38	105.5955.57
A-40	105.5955.58
A-42	105.5955.59
A-44	105.5955.60

Note: each kit contains 8 seals

SCF Seal Conditioning Fluid (250 ml)



P/N 04.8164.90 - SCF has been developed to give the best initial surface conditioning to new Brembo Racing brake caliper seals before assembly. When used correctly, the seals will not require any bedding onto the pistons and the correct seal friction and optimum design performance is achieved immediately

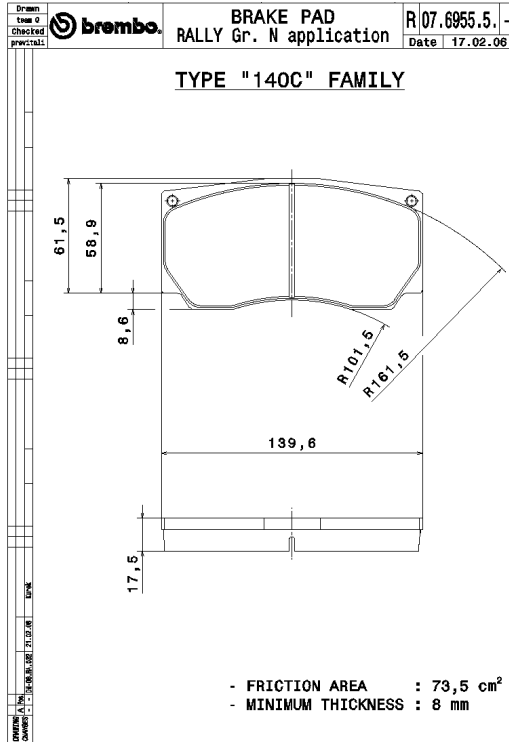


Mitsubishi Lancer Evo X
TECHNICAL BULETIN

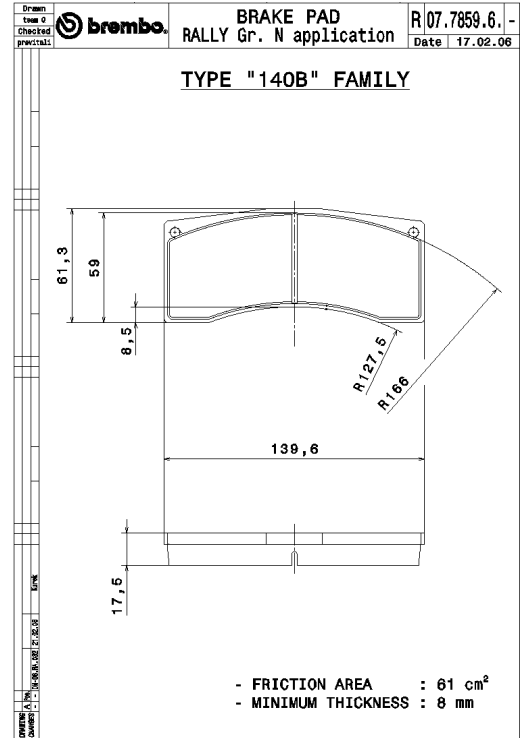
Series	Super Gr.N
Page	3/7
Data	Set 2008

Pads shape

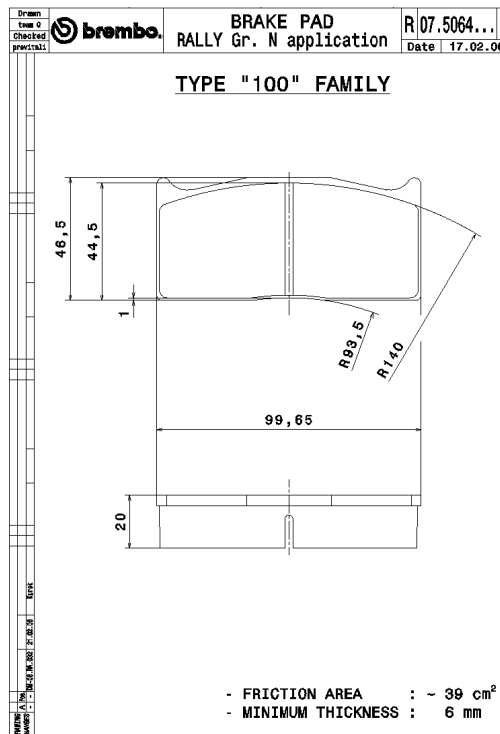
Front tarmac pad shape




Front gravel pad shape



Rear tarmac & gravel
Pad shape



P.S. Pads are not included in the Brembo kit

	Mitsubishi Lancer Evo X TECHNICAL BULETIN	Series	Super Gr.N
		Page	4/7
		Data	Set 2008

Kit Parts list:


XA7G0XX	TARMAC	
XA5T003/04	CALIPER	1+1
XA7G031/32	ASSEMBLY	1+1
XA7G042	BRACKET	2
09930631/41	DISC	1+1
XA7G016	BELL	2
XA7G098	BRACKET SCREW	4
05582923	CALIPER SCREW	4
A3631D140	BRACKET SCREW WASHER	4
A34110014	CALIPER SCREW WASHER	4

XA7G0YY	GRAVEL	
XA5T003/04	CALIPER	1+1
XA7G021/22	ASSEMBLY	1+1
XA7G043	BRACKET	2
09864713/23	DISC	1+1
XA7G018	BELL	2
XA7G098	BRACKET SCREW	4
05582923	CALIPER SCREW	4
A3631D140	BRACKET SCREW WASHER	4
A34110014	CALIPER SCREW WASHER	4

XA7G0ZZ	REAR	
XA7G011/12	CALIPER	1+1
XA7G023/24	ASSEMBLY	1+1
09727709/19	DISC	1+1
XA7G026	BELL	2
A16441298	CALIPER SCREW	4
A36211120	CALIPER SCREW WASHER	4

Brembo recommended pads:

PART NUMBER	DESCRIPTION	
B19.17.170	BREMBO PAD KIT	TARMAC
B18.17.170	BREMBO PAD KIT	GRAVEL
B09.20.170	BREMBO PAD KIT	REAR

	Mitsubishi Lancer Evo X TECHNICAL BULETIN	Series	Super Gr.N
		Page	5/7
		Data	Set 2008

Monobloc Caliper Front & rear



Front Brackets Tarmac-Gravel (no rear bracket on Evo X)





Mitsubishi Lancer Evo X
TECHNICAL BULETIN

Series

Super Gr.N

Page

6/7

Data

Set 2008

Patented Discs Tarmac -Gravel-Rear



Bells Tarmac - Gravel - Rear



Mitsubishi Lancer Evo X
TECHNICAL BULETIN

Series

Super Gr.N

Page

7/7

Data


Set 2008



Disc assembly
Tarmac – Gravel – Rear



Tandem hand brake
Master cylinder

	Mitsubishi Lancer Evo X TECHNICAL BULETIN	Series	Super Gr.N
		Page	8/7
		Data	Set 2008



Tandem master cylinder for hand brake is available in the followings Part Numbers and Sizes:

- X A7 B9 11 16mm
- X A7 B9 12 17mm
- X A7 B9 13 18mm